

Total Working Volume = 6870L

Product	Size
NSG	18

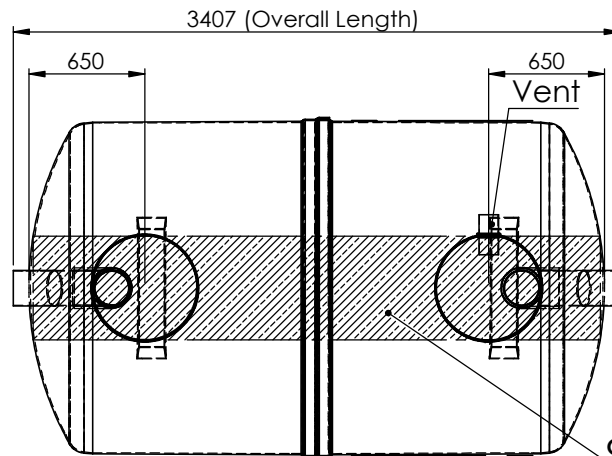
Inlet Invert	Invert
ww	
05	0.5m Invert
10	1.0m Invert
15	1.5m Invert

Pipework Orientation	Orientation
x	
A	
B	
C	
D	
E	
F	
G	
H	
K	

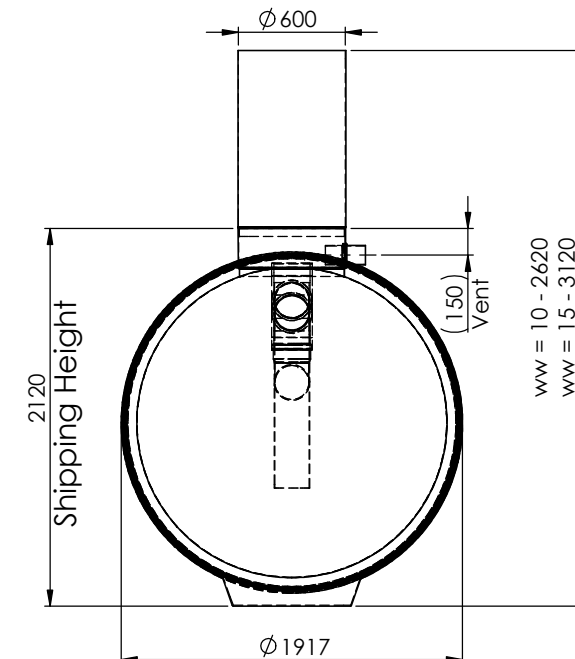
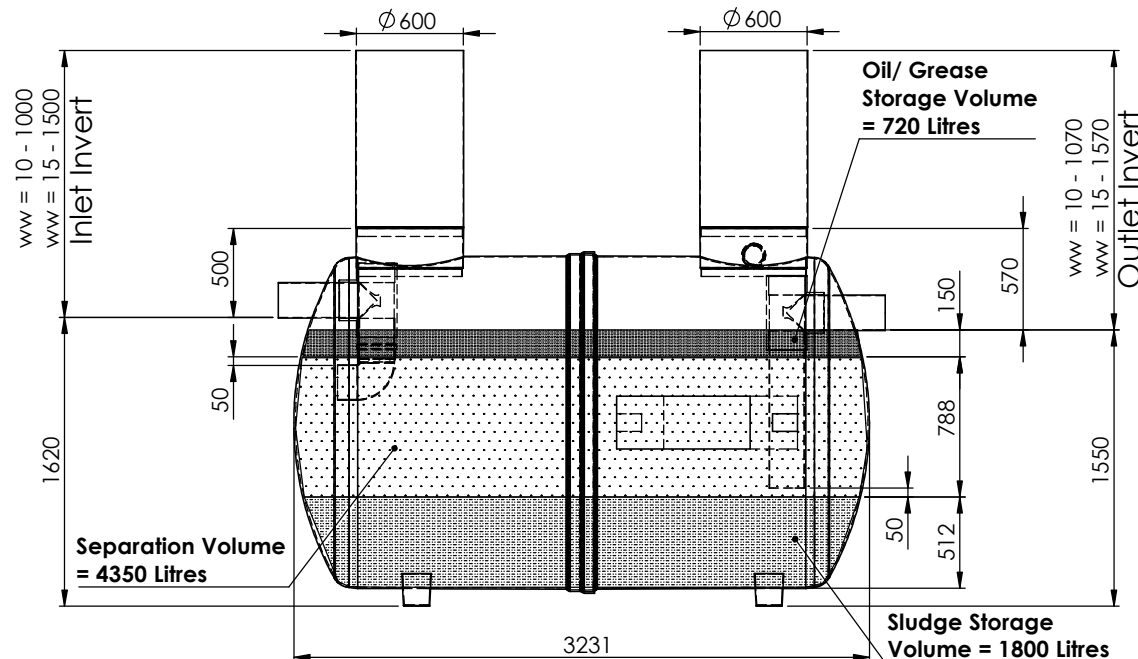
Refer To TDS0033


Standard Connections Size	Connections (Ø)
y	
D	Ø200

z	Branding
B	Clearwater



Oil/ Grease Separation Area = 4.62m²



Please Check with Environmental Treatment Systems Limited For The Latest Issue Of This Drawing					Material : Various	Tolerance :	Drawing : DS1272B	Page 1 of 1
Issue	Date	Drawn by	Approved by	Description	Finish :	Thickness : n/a		
03	11/02/16	L.Steward		CC1294 - Overall Dimensions Added	Weight : 277.09 Kg Kgs	Surface Area :		
02	04/09/15	L.Steward		Product Code Updated			Ø1.8 NSG18 Grease Separator - 8000L	
All dimensions in mm				Scale: Not to scale		Clearwater reserve the right to alter the details of this drawing without prior notice. This drawing is copyright and may not be reproduced or used without the written permission of Clearwater.		
T:\Drawing Data\02 - Sales Drawings\DS\DS - 12\DS1272B								